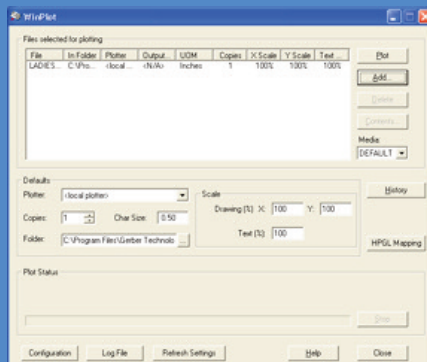


Gerber Technology's GERBERplotter XLP+ integrates value with state-of-the-art inkjet technology. The XLP+ series offers competitive pricing and low cost ownership without ever sacrificing productivity or performance.

The XLP+'s intuitive LCD display panel and software interface allow for reduced operator learning curves and increased ease of use. The Gerber WinPlot software seamlessly integrates with marker making software and can plot a variety of file formats.



Intuitive, multi-functional operator panel



Gerber WinPlot Software

GERBERplotter™ XLP+ Series



Your competitive and intelligent system!

Competitive, economic cost of ownership:

- An affordable inkjet plotter with high level of sophistication and quality
- Highest value proposition in terms of price/square meter in its category
- Low maintenance cost; backed with Gerber worldwide service support
- Ink-saving mode to help extend the life of cartridges
- Easy to install and train to minimize disruptions to CAD room

Intuitive, intelligent system:

- Multi-functional operator panel with large LCD display
- WinPlot software provides easy remote access to plot queues, media settings, and preview files from CAD workstations
- Remotely monitors ink and paper usage. Detects low ink/paper levels and sends alert messages when it needs to be changed
- Intuitive diagnostics to identify root cause and suggested solutions

Superior performance:

- Rigorously engineered to achieve the best plot quality and reliability
- 300 dpi print resolution
- Media accuracy +/- 0.1%
- Adjustable line density provides optimum output to suit specific needs

GERBERplotter XLP+ Series

User friendly, hassle-free maintenance:

- Use proven HP inkjet technology and off-the-shelf standard HP inkjet cartridges.
- Automatic cartridge cleaning system
- Easy access cartridges for replacement
- Sealed capping station prevents ink from drying and allows immediate start up
- Ergonomic front paper load and off-load
- Choose freely between drop-on-floor or take-up roll
- Select face-in or face-out plotting to utilize either side of the paper

Compatible, versatile

- Compatible with most commonly used data types including Gerber generic GEN, HPGL/2, DXF, DWG and NC
- Supports a variety of information such as small pieces with extensive annotations, continuous lines, sewn lines, instructions, etc.
- Plot on a wide-range of materials including recycled paper, bond, kraft paper, and mylar

Minimum Hardware Requirements:

- Pentium IV, 2.0GHz CPU
- 256MB RAM
- 40GB hard drive
- Windows® XP
- One USB 1.1 PORT

Recommended System:

- Pentium IV, 2.8GHz CPU
- 1GB RAM
- 80GB hard drive
- Windows XP with SP2
- One or more USB 2.0 PORT



Standard HP45 ink cartridges



Drop-on-floor mode

Technical Specifications

Characteristics				
Model	XLp+50	XLp+95	XLp+50-220	XLp+95-220
Max. Plot Width	183 cm (72 in)		223,5 cm (88 in)	
Max. throughput	50 m ² /h	95 m ² /h	50 m ² /h	95 m ² /h
Inkjet Heads	1	2	1	2
Resolution	300 dpi			
Media Accuracy	+/- 0.1%			
Feed Roll Inner Diameter	7,6 cm (3 in)			
Feed Roll Outer Diameter	20 cm (7.8 in)			
Max. Media Take-up	75 m (82 yd) Face in or 300 m (328 yd) Face out *			
Plotting Paper Range	40 - 100 g/m ²			
Communication Protocol	HPGL			
PC Interface	USB and Ethernet			
Parameter Setting	Computer control software and LCD control panel			
Machine Net Weight	96 kg (211 lb)		110 kg (242.5 lb)	
Machine Dimensions w x d x h	2635 x 570 x 1044 mm (103.7 x 22.4 x 41.1 in)		3024 x 570 x 1044 mm (119.1 x 22.4 x 41.1 in)	
Packaging Dimension w x d x h	2754 x 694 x 682 mm (108.4 x 27.3 x 26.9 in)		3197 x 730 x 700 mm (125.9 x 28.7 x 27.6 in)	
Power	110 or 220 VAC, 50-60 Hz, 360W			
Temperature	5° - 30° Celsius			
Humidity	30 - 85 non-condensing			

*Media is measured in 35lb bond paper

NOTE: Configurations vary according to options selected.
Specifications are subject to change without notice.

GERBERplotter™ is a trademark of Gerber Scientific, Inc.
Windows® is a registered trademark of Microsoft.

GERBERplotter products are patent protected.