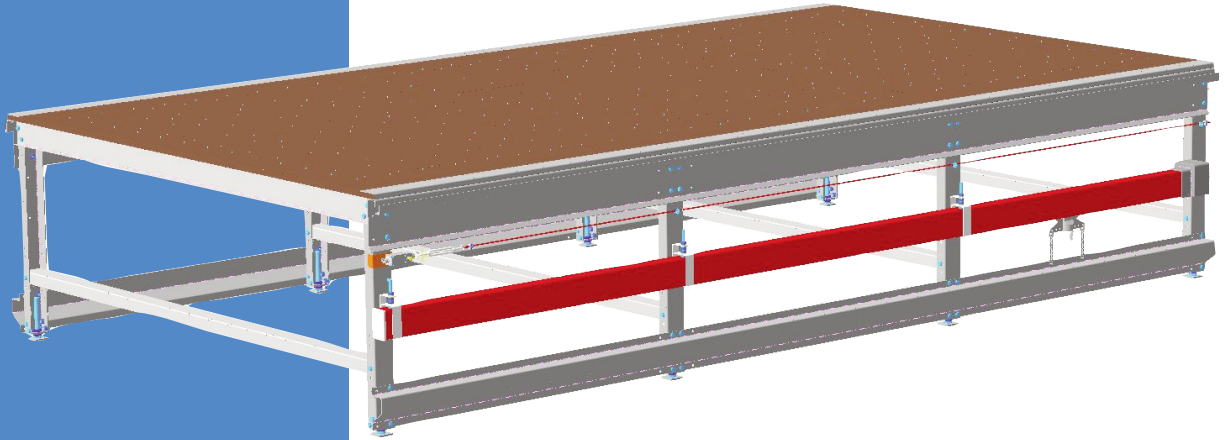


Spreading Table model G



The GERBER spreading table model G is designed to handle spreaders with a roll weight capacity from 50 kg up to 250kg.

Table top for model G spreading table.

- The Model G spreading table is available with or without air flotation. Users can choose one of two table surfaces – a laminated surface for manual or automated cutting and a film surface suitable for automated cutting only.

Other features.

- For air flotation each table section has its own ready-made plastic air-box ensuring the right amount of air for lifting the material.
- For left or right hand operated Spreading machine. Running rails and operator platform rails on both sides of the table are integrated part of this table.
- Table model G is designed in standard widths to support the Gerber spreader product line and many standard width spreaders and cutters.
- Power rail can be mounted on pre-drilled holes on both sides of the table.

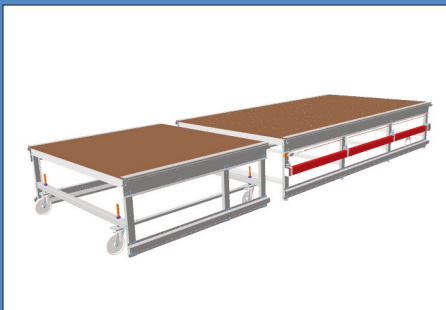
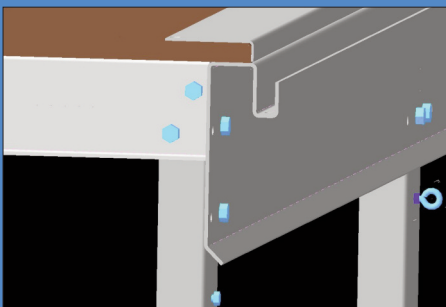


Table model G with Manual Transfer Table



Guide rail and side frame combination

Frame for model G spreading table.

- Specially designed sturdy steel construction capable of withstanding the load of a fully equipped spreader totaling a weight of up to 800 kg.
- Made in a combination of 2 mm and 3 mm plated steel.
Legs and traverse beam 2 mm.
Side frame 3 mm.
- Sectioned in standard modules of 120 cm. (special 60 cm length available upon request)
- Multi adjustable height from 75 cm to 95 cm covering the A-B-C-D Gerber cutter height
- Leveling of the table is done easily and quickly by adjusting the leveling screws in the table legs.

Spreading Table Model G

Table widths:

Model G is available with or without air cushion in the following widths:

Max. width of material in cm	Max. width of table in cm
160	180
180	200
200	220
220	240
240	260

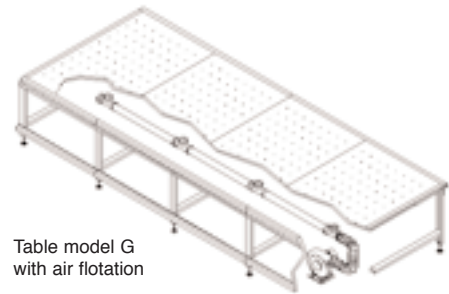
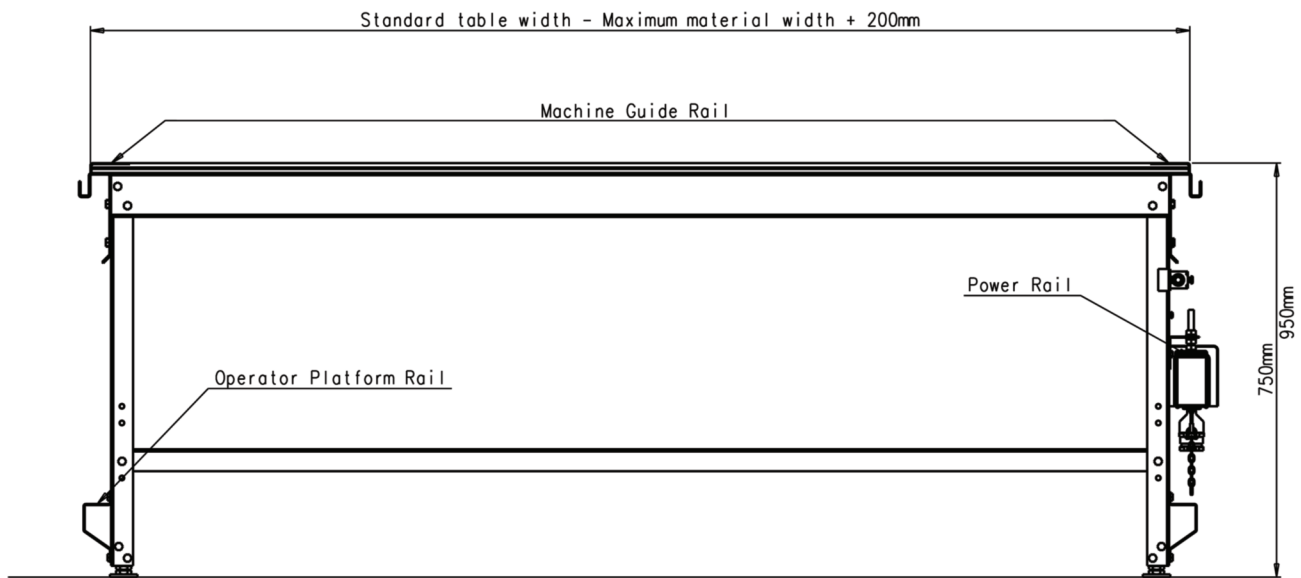


Table model G with air flotation



End View

Blower recommendation

For light weight material:

- 1 blower per 10-12 meters

For heavy weight material like denim and similar material spread up to 120 ply :

- 1 blower per 6-7 meters

Power requirements per blower

3 x 220-240 Vac + PE 50/60 Hz 10A

3 x 380-415 Vac + N + 50/60 Hz 10A

Power consumption (peak) 0.52 kW