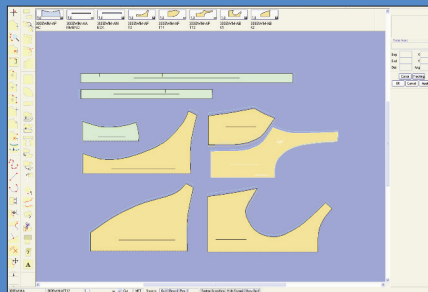


Enhance the skill, experience and productivity of today's pattern makers with Gerber's Silhouette™.

Silhouette automated technology eliminates time-intensive, repetitive tasks, enabling you to make patterns in less time.

Silhouette functions similar to a tablet PC. What you draw or trace on the interactive table is automatically converted to digitally formatted patterns which can be used to make markers/nests instantly.



Create new patterns or modify existing ones for new styles.



Cordless rechargeable 2-button electronic pen simplifies pattern drafting and digitizing.



16-button cursor accelerates digitizing.

Silhouette



Create unparalleled synergy by providing seamless interactions between manual processes and computer automation.

Accelerate the pattern design process.

- Draw arrows, quick notes and other hand-drawn graphics directly onto the computerized pattern shapes.
- Input fit adjustments from the sample to computerized patterns by tracing directly on the Silhouette table, eliminating the need to measure the corrections.
- Instantly reflect any design changes into your pattern.
- Automatically update seam allowances and/or grading after pattern modifications.
- Exchange information with a wide range of CAD systems through Gerber AccuMark® pattern design, grading and marker making system.

Ease the transition from manual to digital pattern making.

- Use the 2-button stylus pen for drafting and the 16 button cursor for digitizing. Silhouette dual input functions allow you to convert hard patterns to digital format, or trace new patterns using existing garments or samples without disassembling them.
- Enjoy the flexibility and ergonomics provided by Silhouette. Silhouette can be your integrated workstation. The base includes a swinging monitor arm which allows the monitor to be moved closer for detailed work, or moved out of the way when drafting and sketching.
- Draw in full scale on the Silhouette table and allow the system to size it to the computer screen.
- Work in a familiar environment with common tools like pens, rulers and pins.
- Pin garments or samples to the table top and trace pattern shapes into the system.

Silhouette

Available Options & Services

- Complete service and parts supply packages available
- Comprehensive operator and technician training available

Silhouette Vinyl Overlay Kit (Optional)

The kit includes two pre-cut sheets of "self-healing" vinyl and Velcro straps to hold in place.

System Requirements

- 1GB minimum, 2 GB recommended RAM
- 2+ GHz or faster computer
- Windows® XP with current service packs, Windows Vista® for AccuMark v8.3.0 or higher or Windows 7® for AccuMark v8.4.0 or higher
- 1280 x 1024 UVGA color graphics display
- Installs on AccuMark v8.2 or higher or a PC networked to AccuMark

NOTE: Configurations vary according to options selected. Specifications are subject to change without notice.

Silhouette™ is a trademark of Gerber Scientific International, Inc.

AccuMark® is a registered trademark of Gerber Scientific International, Inc.

Windows®, Windows Vista® and Windows 7® are registered trademarks of Microsoft Corporation.

All other trademarks or registered trademarks are the property of their respective owners.

Silhouette products are patent protected.

