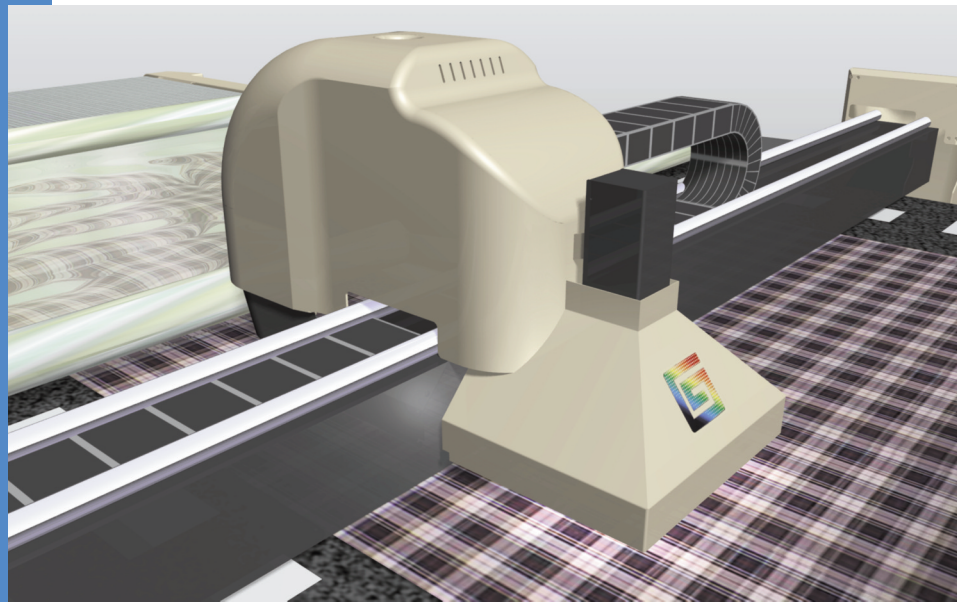


InVision™

The InVision matching system for stripes, checks, prints and plaids carries out matching and cutting operations simultaneously, increasing accuracy and throughput in your cutting room.

This optional, on-cutter system works with your GTxL or GT1000 GERBERcutter to improve the finished quality of your plaid- and stripe-matched products by compensating for fabric irregularities and delivering thread-to-thread accuracy of cut parts.



Increase accuracy and throughput with on-cutter matching of stripes, checks, prints and plaids.

Improve productivity and finished quality of matched products.

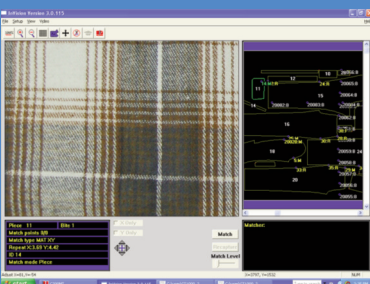
- Completely automates the matching process thereby eliminating errors that can occur when using manual or semi-automated matching processes.
- Reduces labor and material costs because there is no need for skilled operators to manually match fabrics.
- Eliminates need for material to be "block" cut.

Simplify and enhance matching and cutting with an intelligent vision system.

- Zoom in on critical areas for added precision with advanced camera and optics system.
- Achieve precise matching even through plastic overlay with state-of-the-art lighting system and imaging techniques.
- Increase accuracy with PicturePerfect™ technology that corrects for distortions in the fabric spread, so the processed image appears as it will on the finished part.

Maintain complete control of your matching.

- Use the intuitive graphical operator interface to make any manual piece-to-piece matching as simple as sliding an image into place on the screen.
- Make corrections for irregularities in the fabric's repeat pattern.
- Select your choice of matching methods: point matching, flow matching, spot matching five-star matching
- Select alternative solutions or override and correct match manually when overlapping occurs.
- Establish piece-to-piece matching relationships based on a pattern piece's relationship to the fabric or to other pattern pieces.



Use the graphical operator interface to make any necessary manual piece-to-piece matching.

NOTE: Configurations vary according to options selected. Specifications are subject to change without notice. GERBERcutter® is a registered trademark and InVision is a trademark of Gerber Scientific International, Inc.

Gerber Technology, Tolland, CT 06084 USA
gerbertechnology.com
Copyright © 2011 Gerber Scientific International, Inc.
Form No. Invision_E - 05022011