

GERBERcutter GTxL

NEW
2,2 meter-wide model

The GERBERcutter® GTxL is a low-ply conveyORIZED system capable of cutting up to 2.5 cm (1 in) of compressed materials, using Gerber's state-of-the-art reciprocating knife technology.

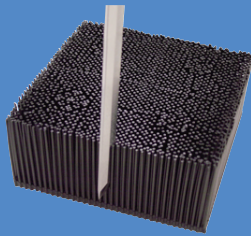
A conveyORIZED cutting table efficiently moves material from the spreading table to the cutter and then moves cut parts onto the bundling area.



Get the most from your cutting system.

Get accurately cut parts every time.

- The GTxL employs a powerful vacuum system to hold material firmly in place during the cutting process delivering cut parts that are accurate ply to ply.
- Automatic SMARTbite™ calculator analyzes each marker to determine the maximum number of pieces to be cut with a minimum number of material advances to maximize cutter throughput.
- Long vertical knife strokes and automatic knife re-sharpening eliminate hanging threads ensuring quality cut parts from top to bottom ply.
- Operators can easily adjust cut speed and knife speed according to the type of material being cut to maximize throughput.



Long-lasting GERBER BRISTLE SQUARE® cutting surface allows knife blade to penetrate without damage

Easy to use and comfortable to operate.

- C200 MT Windows-based cutter control software employs an intuitive graphical user interface that simplifies operator training and daily use. It includes online help and built in diagnostics. Continuous, real-time, graphical display of operating parameters, vacuum level and cut speed provides a comprehensive overview of the entire cutting process.
- Easily stores cutting setup files for quick retrieval to accelerate future cut jobs.
- Fully network-compatible for easy transfer of data from CAD systems.



Graphical user interface simplifies operator training and daily use

Realize a fast return on your investment.

- The GTxL generates a report upon request that provides critical information concerning time management. Reports specify information by shift including how long the cutter was in operation, how many times operation was stopped, average cut speed, total perimeter of parts cut and more.
- Automated cutting requires less labor to generate more cut parts.
- The GTxL is designed to use longer-lasting consumables.
- An optional, intelligent, high-efficiency vacuum control lowers electrical consumption and associated expenses.
- With its low initial capital investment, low cost of ownership and superb accuracy and throughput, the GTxL delivers the best price-performance in its class.



Optional InVision™ plaid and stripe matching system delivers thread-to-thread accuracy of cut parts *

GTxL

Available Options & Services

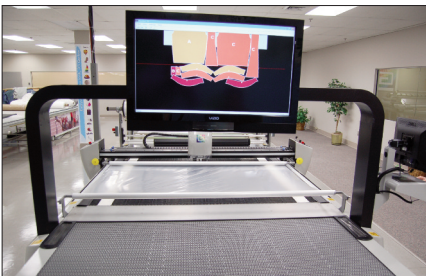
- Lateral travel kit enables cutter to move between multiple spreading tables
- Variable vacuum level control (standard on 2.2 m wide version)
- Complete service and parts supply packages
- Comprehensive operator and technician training



The cutting head can be fitted with up to two optional drills – each accommodating bits up to 9.5 mm (3/8 in) in diameter or optional pen with single drill



GERBERSpreader™ tension-free material spreading system



An optional display identification station helps workers identify cut parts quickly and accurately during the bundling or kitting process *



An optional knife chiller keeps the blade cool during cutting

Technical Specifications

Characteristics

Fabric height (compressed)	2.5 cm	1.0 in
Cutting speed (maximum)	46 m/min	1800 in/min
Cut width	1.7 m or 2.2 m	67 in or 86.5 in
Cut length	1.7 m	67 in
Throughput - average (depending on application)	10.2 m/min	400 in/min
Head acceleration (maximum)	3.7 m/s ²	3/8 g
Table weight - 1,7 m wide	2,548 kg	5,618 lbs
Table weight - 2,2 m wide	3068 kg	6,763 lbs
Table heights - 1,7 m wide	75-90 cm in 5 cm increments	± 30-36" in 2" increments
2,2 m wide	80-90 cm in 5 cm increments	± 30-36" in 2" increments

Power

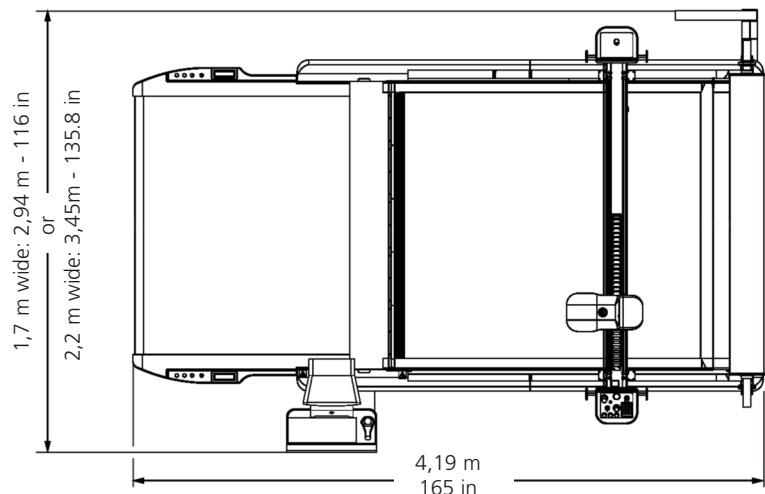
Control Power	3-wire 200V-240V, single phase, 50/60 Hz, 20 A	
Table Vacuum	190/240V, 3-phase, 50/60 Hz, 50 A 380/440V, 3-phase, 50/60 Hz, 25 A	
Average Consumption	10 KW for 3-phase system	
Compressed Air	113 liters/min @ 6.8 bar	4 SCFM @ 100 PSI

Operating Environment

Temperature (maximum)	43°C	110°F
Humidity (maximum)	95% (non-condensing)	
Vacuum System	up to 760 m above sea level	up to 2,500 ft. above sea level
Noise	75 dBA	

Cut Data File Specifications Supported

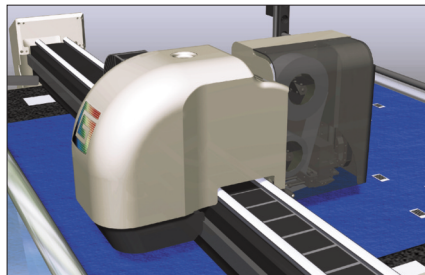
- Interface to open standard data formats produced by most CAD products
- Gerber AccuMark™ native marker data



NOTE: Configurations vary according to options selected. Specifications are subject to change without notice.

GERBERcutter®, AccuMark and GERBER BRISTLE SQUARE® are registered trademarks of Gerber Technology. InVision, InfoMark, GERBERSpreader and SMARTbite are trademarks of Gerber Technology.

* not available with 2,2 m wide cutter.



InfoMark™ cut piece identification system *