

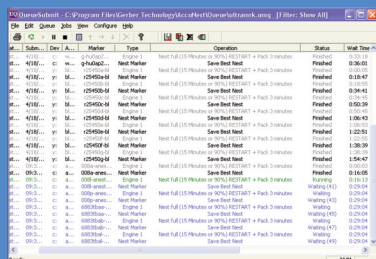
AccuNest™ Professional Edition

AccuNest Professional Edition (PE) software combines powerful autonesting capabilities with versatile job management functions to maximize time and material utilization.

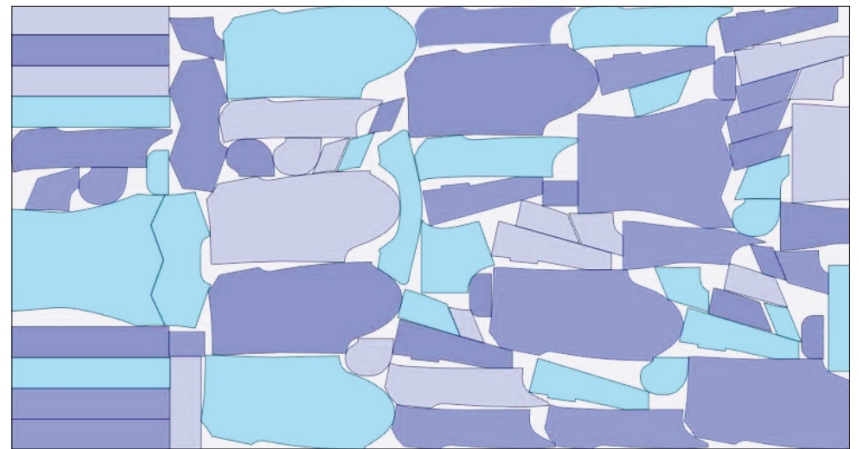
AccuNest PE creates new, efficient marker layouts automatically, analyzing multiple solutions and selecting the marker with the best material utilization. AccuNest PE is easy to operate and is substantially faster and more efficient than manual marker making, enabling you to save time and money when making sample, costing and production markers.



Automatically nest costing and production markers.



Quickly and easily identify jobs in the queue for at-a-glance comparisons.



Maximize marker making operations with powerful autonesting.

Accelerate marker making.

- Automatically nests costing and production markers to generate accurate and fast consumption calculations and generate efficiencies.
- Creates automatic layouts for stripe and plaid materials respecting piece constraints and matching lines.
- Automatically finishes partially laid marker - you control critical part location while allowing remaining parts to be nested automatically for time savings.

Increase profitability.

- Respects all material constraints applied to pieces such as directional rotation, tilt allowances and spread constraints to maintain high levels of quality and minimize costly mistakes in the cutting room.
- Groups pieces by size or bundle into sections to maintain proximity of pieces in the marker for shade variations.
- Make markers 24 hours a day with unattended overnight processing of markers to respond to peak demands with no additional labor charges.
- Predefine unusable areas of the material to avoid nesting over faults and defects for improved quality without added labor.

Improve job management using UltraQueue™.

- Included UltraQueue software allows you to submit markers from AccuMark workstations to a holding queue for processing.
- Fast and easy identification of jobs in the queue for at-a-glance comparison of process times, marker lengths and yields.
- Provides off-line processing to optimize marker-making time.
- Marker Viewer displays yardage and yields without the need for a marker making license.
- Color-coded management view of all work in process and completed jobs allows users to see at a glance which markers are in what stages without having to open every marker being created or run a job report.
- Export job queue to CSV file for reporting and administration.

Seamless integration.

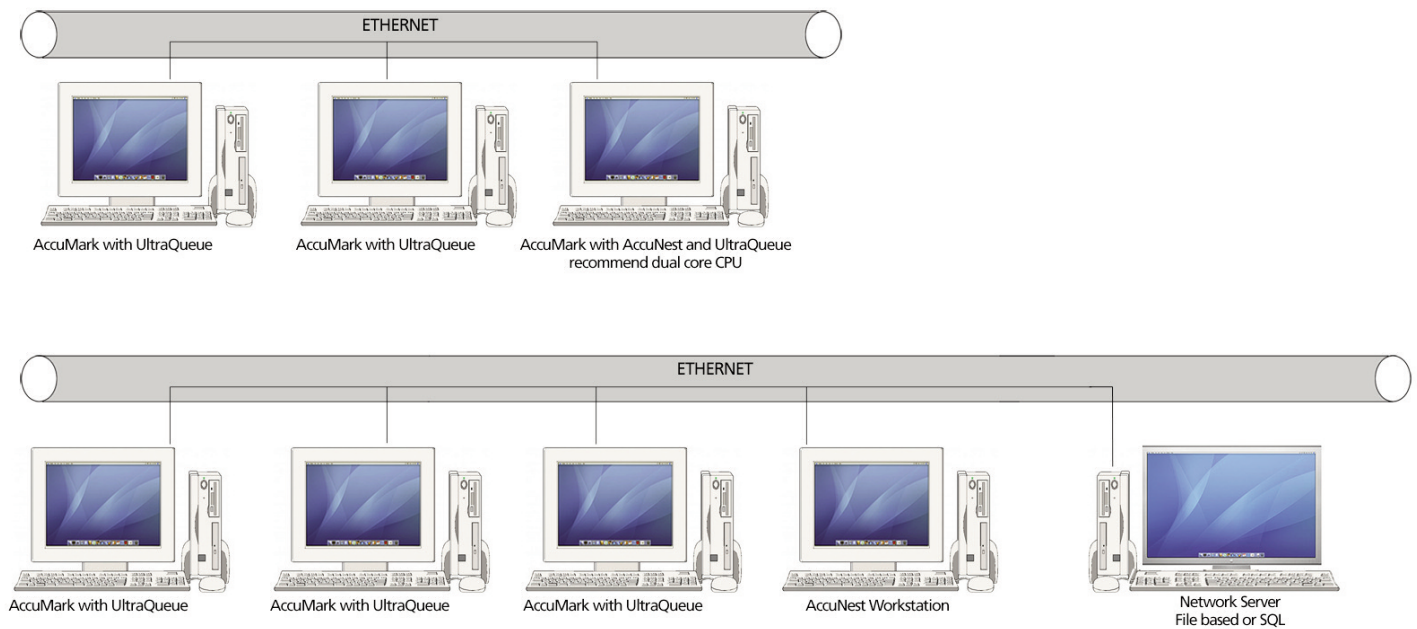
- Fully integrated with AccuMark and batch processing.
- Import model, piece and marker data from most common apparel CAD packages to generate or re-nest markers.
- Full access to standard and SQL storage areas over LAN or WAN for flexible storage.

AccuNest

Professional Edition (PE)

System Requirements

- 2GB minimum, 3-4 GB RAM recommended
- Intel® 2GHz Pentium 4 minimum, QuadCore 3.3GHz recommended
- Windows XP®, Windows Vista® as of V8.3; Windows 7 32/64 bit as of V8.5
- Installs on AccuMark V8.2 or higher PC
- AccuNest can be added to an existing AccuMark software seat. The existing AccuMark software license must be updated adding the AccuNest functionality
- AccuNest can be installed on a PC without AccuMark software installed. It must be networked to at least one AccuMark system



NOTE: Configurations vary according to options selected. Specifications are subject to change without notice.

AccuMark® is a registered trademark of Gerber Scientific International, Inc.
AccuNest™ and UltraQueue™ are trademarks of Gerber Scientific International, Inc.
Pentium® is a registered trademark of Intel Corporation.
Windows®, Windows XP®, Windows Vista® and Microsoft® are registered trademarks of Microsoft Corporation.
NetWare® is a registered trademark of Novell Inc.

All other trademarks or registered trademarks are the property of their respective owners.