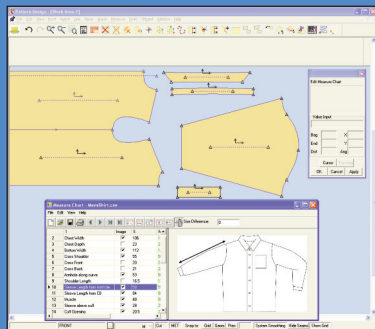


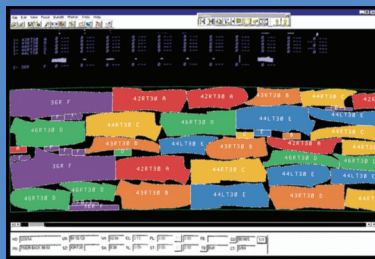
# AccuMark®

AccuMark software contains the most comprehensive set of pattern development tools in the industry, along with many other features to meet the fast-changing needs of today's manufacturers.

AccuMark enables you to use automation to get more products out the door every day and protects your business by storing your information electronically. This saves you expensive floor space and protects you in the event of a natural disaster.



Pattern Wizard provides pre-defined and pre-graded garment types for men, women and children.



View material usage as you make the marker.

## Make the most of your time and material.

### Speed up pattern design.

- Create new patterns or modify existing ones. No need to start from scratch every time.
- Performs multiple operations simultaneously.
- Automatically applies pattern modifications to all related pieces.
- Quickly create new patterns or modify existing ones.
- Select from more than 20 different automatic seam corners.

### Simplify grading.

- Carries out even the most complicated grading calculations instantly, according to the rules you specify.
- Create, edit and measure sizes using powerful, easy to use grading features.
- Automatically adapts notches to pattern changes across all graded sizes.

### Accelerate marker making and save fabric.

- Batch process jobs to maximize and streamline throughput.
- View material usage as you make the marker.
- Flip and rotate pieces with easy-to-use tools to maximize marker efficiency.
- Substitute sizes in markers and automatically generate new ones.
- Combine one or more markers to optimize cutting capacity.
- Maximize productivity with the ability to use either mouse or keyboard functions.
- Guided marker order process provides extensive control over quality standards.
- Easy Plan can automatically create marker orders and markers.
- Enter fabric weight to calculate material costs more accurately.

### Improve data management and communication.

- Utilizes sophisticated search tools for data management.
- Easily input hard patterns from digitizer.
- Import and export marker data to a wide range of CAD systems.
- Email pattern data to business partners.
- Customize toolbars and get on-line help

### Drive cutting processes.

- Define cutting path for automatic cutters to minimize dry haul.
- View cut path of pieces and define start points.
- Control cut direction on mirrored pieces.

# AccuMark

Advanced Edition (AE)  
Professional Edition (PE)

---

## Optional Hardware Components

---

### Plotters

- GERBERplotter™ series of high-speed pen and inkjet plotters
- Supports plot widths up to 2400 mm (94.5 in)

### Digitizing Workstations

- Pattern input digitizer with 16-button cursor
- Table size: 1115 x 1520 mm (44 x 60 in)
- Supports input of pieces up to 2200 x 13500 mm (85 x 530 in)

---

## Optional Software Components

---

- AccuNest™ - automatic marker making software
- GERBERplanner™ - cut planning software selects the most cost efficient markers for your cut orders

---

## System Requirements

---

- XP
  - Pentium IV
  - 2.0 GHz or Higher
  - 2+ GB memory
- Vista / Windows 7
  - 3 GHz 32/64 bit (x86) or 1.7 GHz dual core
  - 2+ GB memory

NOTE: Configurations vary according to options selected. Specifications are subject to change without notice.

AccuMark® is a registered trademark of Gerber Scientific International, Inc.

AccuNest™, Silhouette™, GERBERplotter™ and GERBERplanner are trademarks of Gerber Scientific International, Inc.

Windows® and Windows XP® are registered trademarks of Microsoft Corporation.

Pentium® is a registered trademark of Intel Corporation.

All other trademarks or registered trademarks are the property of their respective owners.